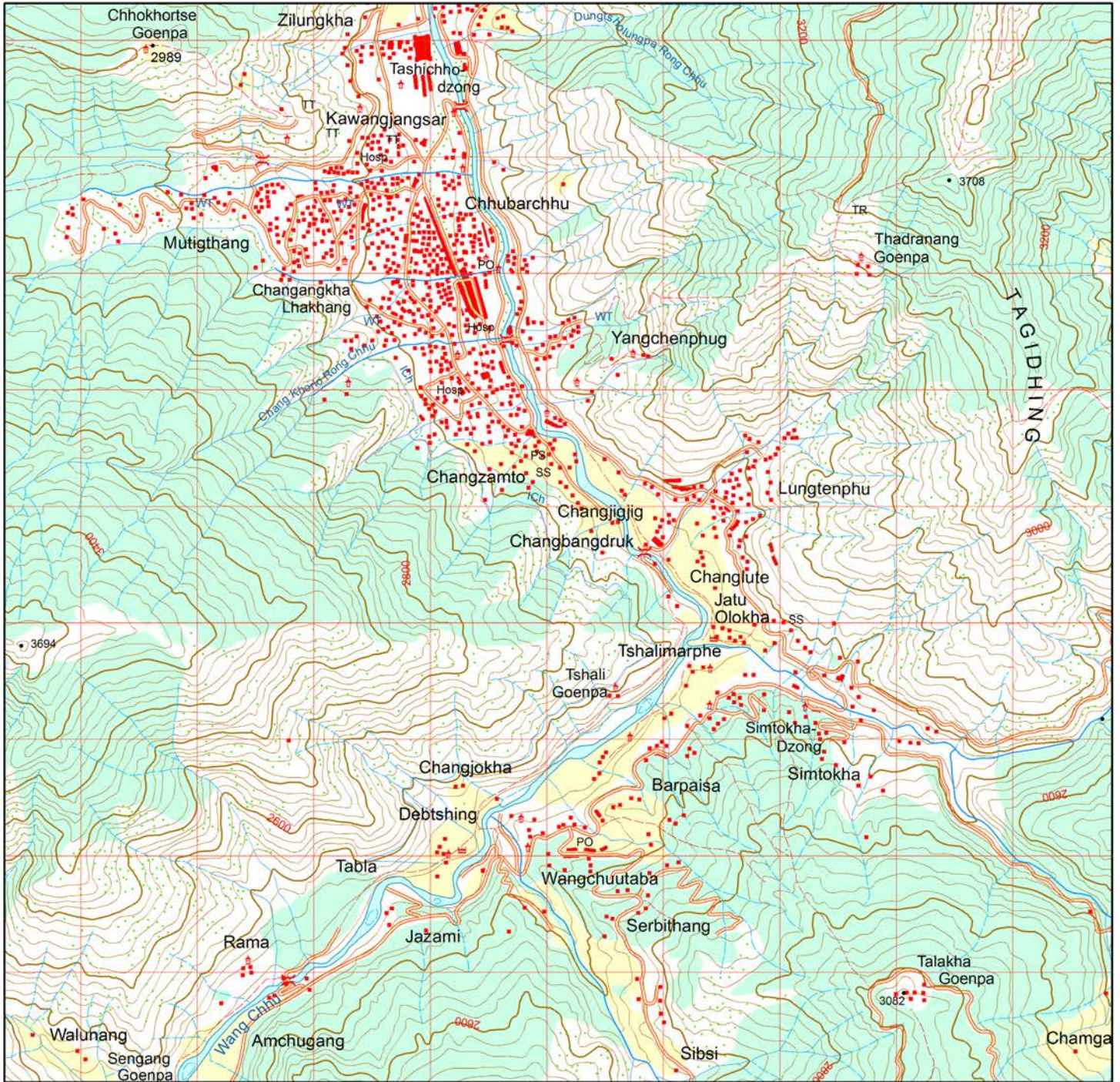


# TOPOGRAPHIC MAP

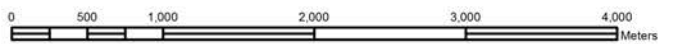
78E/11(PART)



### Legend

- |                         |                          |                      |
|-------------------------|--------------------------|----------------------|
| • Buildings             | • Spring                 | — Unpaved Road       |
| • Lhakhang              | → Flow Direction         | - - - Footpath       |
| • Mani/Chorten          | ⊥ Cliff                  | ~ Dry stream         |
| • Chorten               | ♣ Plantain               | ~ River              |
| • Suspension Footbridge | • Tree                   | ~ Irrigation Channel |
| • Spot Height           | • Bamboo                 | ~ Broken top         |
| • Triangulation Point   | • Grass                  | ~ Earth slip         |
| • Bench Mark            | • Group of trees         | ~ Contour            |
| • Boundary Pillar       | • Betelnut               | □ Airfield           |
| • Gate                  | — Dzongkhag Boundary     | ■ Forest             |
| • Km stone ticks        | — Gewog Boundary         | ■ Orchard            |
| • Power House           | — International Boundary | ■ Scrubs, Bushes     |
| • Transmission Tower    | — National Highway       | ■ Cultivated Area    |
| • Vehicle Bridges       | — Paved Road             |                      |

1:50000 (2cm on the map = 1km on the ground)



HEIGHTS & CONTOURS ARE IN METRES

CONTOUR INTERVAL 40 METRES

Published by National Land Commission, Map Production Division  
Projection System : Drukref TM