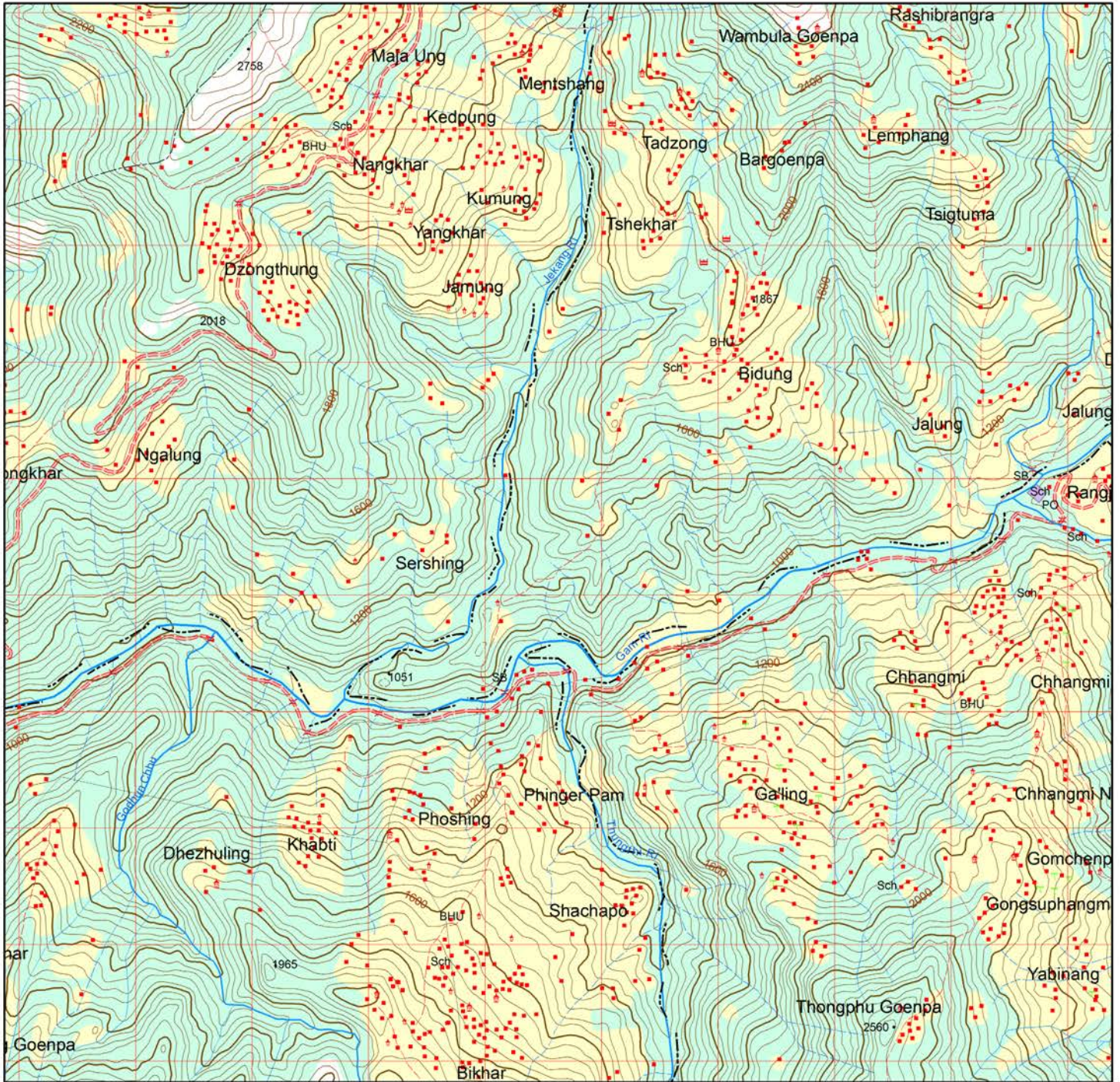


TOPOGRAPHIC MAP

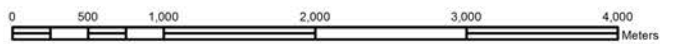
78M/11(PART)



Legend

- | | | |
|-------------------------|--------------------------|----------------------|
| • Buildings | • Spring | — Unpaved Road |
| • Lhakhang | → Flow Direction | - - - Footpath |
| • Mani/Chorten | ▬▬▬ Cliff | ~ Dry stream |
| • Chorten | • Plantain | ~ River |
| • Suspension Footbridge | • Tree | ~ Irrigation Channel |
| • Spot Height | • Bamboo | ~ Broken top |
| • Triangulation Point | • Grass | ~ Earth slip |
| • Bench Mark | • Group of trees | ~ Contour |
| • Boundary Pillar | • Betelnut | □ Airfield |
| • Gate | — Dzongkhag Boundary | ■ Forest |
| • Km stone ticks | — Gewog Boundary | ▨ Orchard |
| • Power House | — International Boundary | ▨ Scrubs, Bushes |
| • Transmission Tower | — National Highway | ■ Cultivated Area |
| • Vehicle Bridges | — Paved Road | |

1:50000 (2cm on the map = 1km on the ground)



HEIGHTS & CONTOURS ARE IN METRES

CONTOUR INTERVAL 40 METRES

Published by National Land Commission, Map Production Division
Projection System : Drukref TM